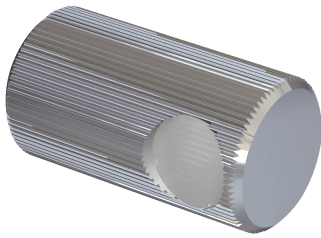


## LL3-TA02

Fiber-optic cables

**FIBER-OPTIC SENSORS**

**SICK**  
Sensor Intelligence.



### Ordering information

Type	part no.
LL3-TA02	5308129

Other models and accessories → [www.sick.com/Fiber-optic\\_cables](http://www.sick.com/Fiber-optic_cables)

### Detailed technical data

#### Features

<b>Device type</b>	Attachment lens for optical fiber cable
<b>Functional principle</b>	Through-beam system, consisting of a sender and a receiver
<b>Special features</b>	Suitable for detection with high sensing range / high robustness against contamination, 90° offset
<b>Optical fiber head</b>	
Angle of dispersion	18°
<b>Items supplied</b>	2 pieces
<b>Sleeve material</b>	Brass (Br)
<b>Lens material</b>	Glass

#### Mechanics

<b>Optical fiber head</b>	
Thread diameter (housing)	M2.6
<b>Weight</b>	3 g

#### Ambient data

<b>Ambient operating temperature</b>	-40 °C ... +70 °C
--------------------------------------	-------------------

#### Classifications

<b>ECLASS 5.0</b>	27270905
<b>ECLASS 5.1.4</b>	27270905
<b>ECLASS 6.0</b>	27270905
<b>ECLASS 6.2</b>	27270905
<b>ECLASS 7.0</b>	27270905
<b>ECLASS 8.0</b>	27270905
<b>ECLASS 8.1</b>	27270905
<b>ECLASS 9.0</b>	27270905
<b>ECLASS 10.0</b>	27270905
<b>ECLASS 11.0</b>	27270905
<b>ECLASS 12.0</b>	27270905
<b>ETIM 5.0</b>	EC002651
<b>ETIM 6.0</b>	EC002651
<b>ETIM 7.0</b>	EC002651

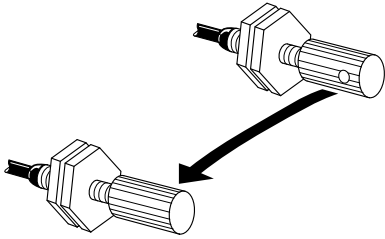
ETIM 8.0

EC002651

UNSPSC 16.0901

39121528

### Functional principle

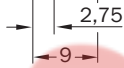


### Dimensional drawing LL3-TA02

M 2,6 x 0,45

Depth 3,0

ø5



Dimensions in mm (inch)

SpareCruX

## SICK AT A GLANCE

SICK is one of the leading manufacturers of intelligent sensors and sensor solutions for industrial applications. A unique range of products and services creates the perfect basis for controlling processes securely and efficiently, protecting individuals from accidents and preventing damage to the environment.

We have extensive experience in a wide range of industries and understand their processes and requirements. With intelligent sensors, we can deliver exactly what our customers need. In application centers in Europe, Asia and North America, system solutions are tested and optimized in accordance with customer specifications. All this makes us a reliable supplier and development partner.

Comprehensive services complete our offering: SICK LifeTime Services provide support throughout the machine life cycle and ensure safety and productivity.

For us, that is “Sensor Intelligence.”

### WORLDWIDE PRESENCE:

Contacts and other locations – [www.sick.com](http://www.sick.com)

SpareCruX